

GUARD 101

2023



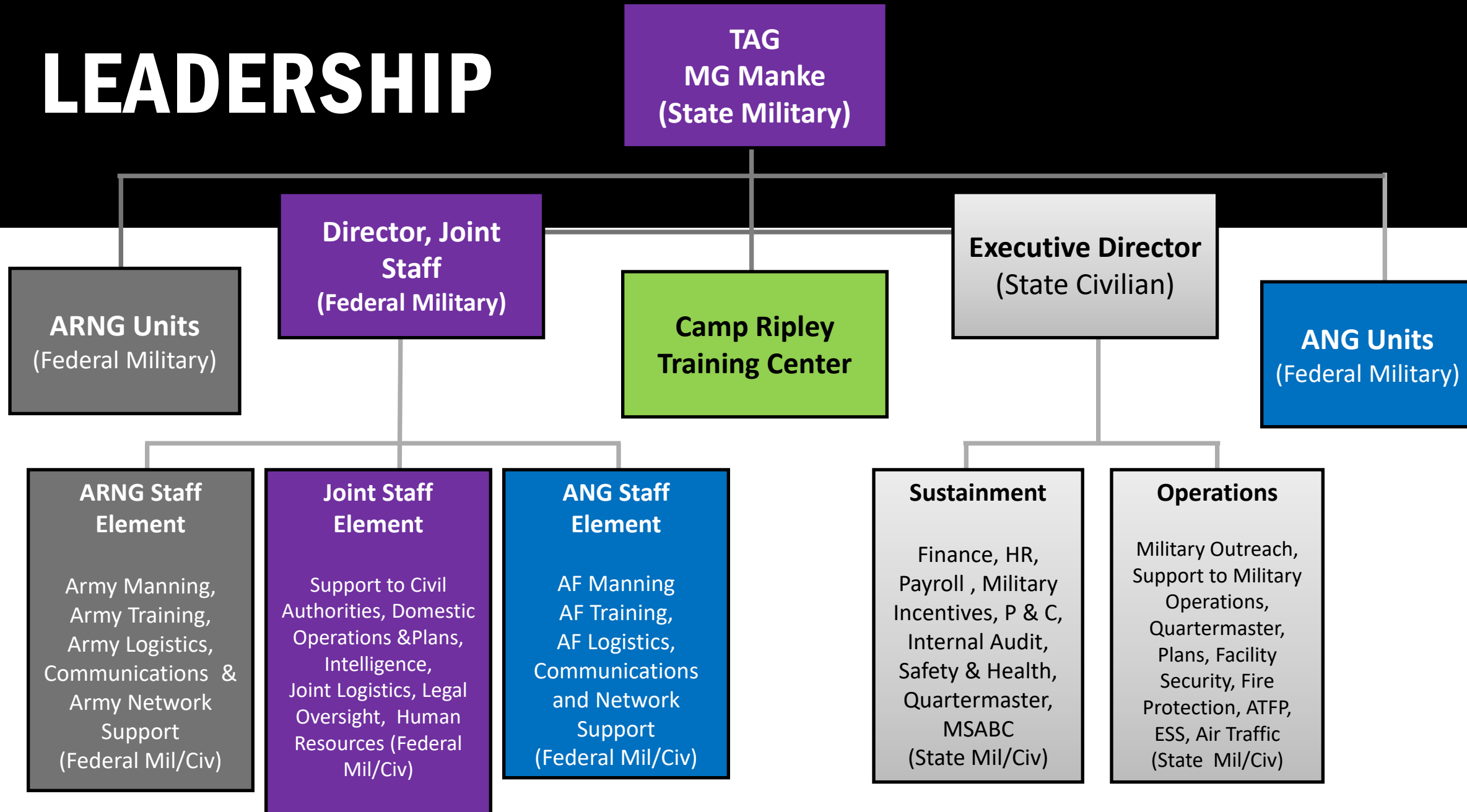
Minnesota National Guard

OVERVIEW

- **13,000 Soldiers & Airmen**
 - Full-time and part time
- **Dual Mission**
 - Oath to the U.S. and MN
- **Located across Minnesota**
 - In more than 50 communities



LEADERSHIP



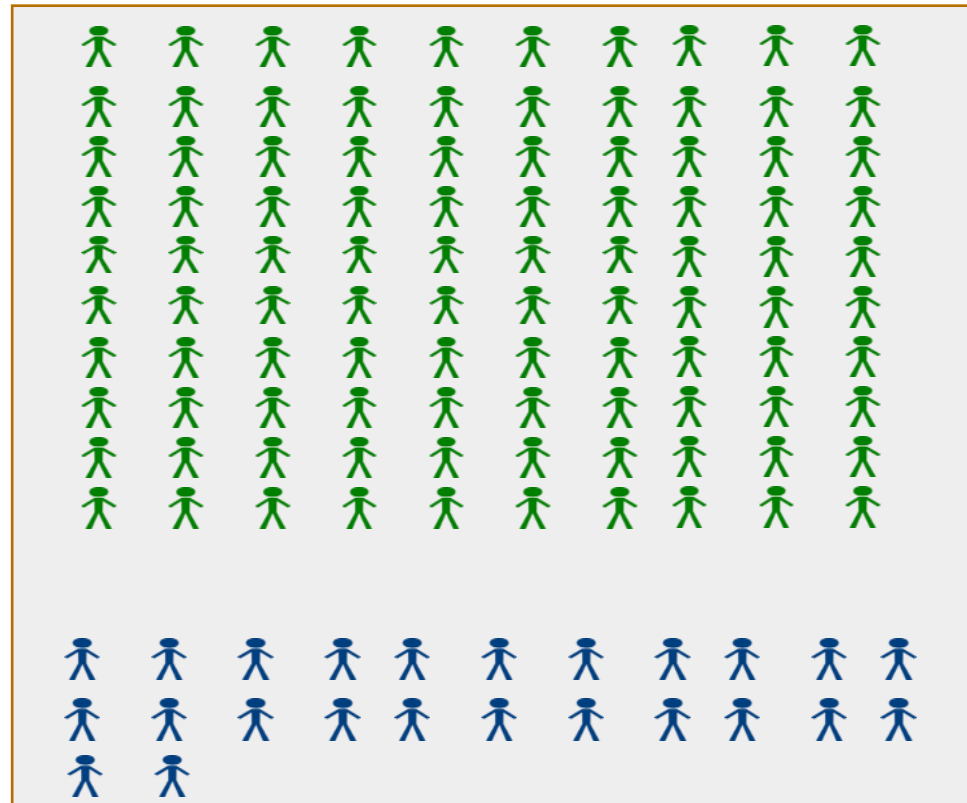
FULL TIME STAFF/TRADITIONAL

Full Time Staff



👤 = 100

Citizen Soldiers and Airmen



Full Time Staff are only a small portion of the overall Minnesota National Guard. They enable the readiness of the units and equipment.

ORGANIZATIONAL PRIORITIES

- People
- Modernization
- Partnerships



PRIORITY—PEOPLE

People are at the center of any successful organization.

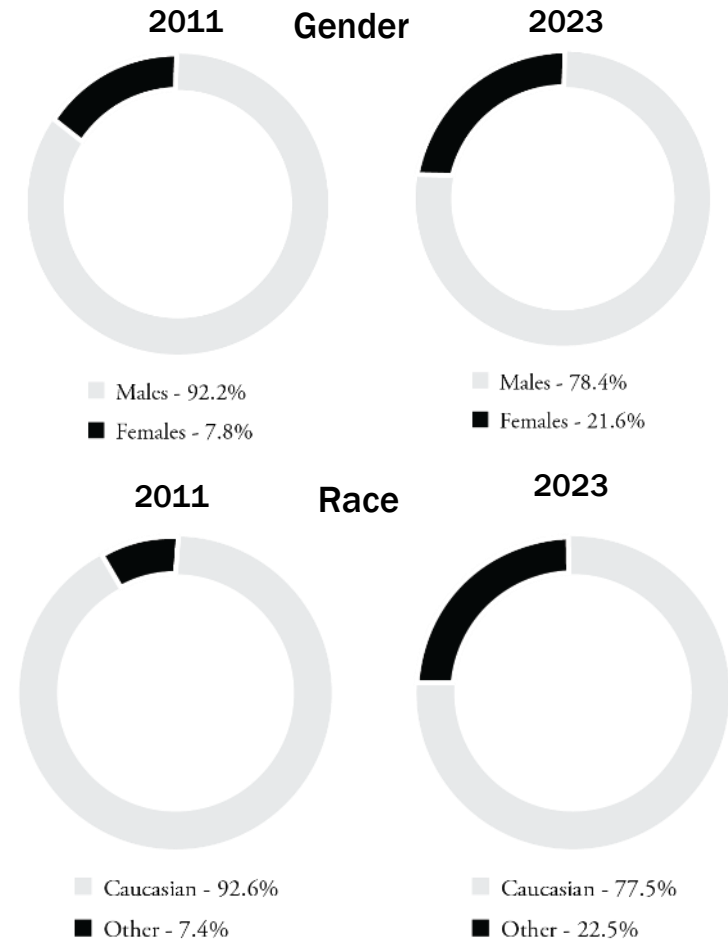
Investment in our Soldiers, Airmen, and civilian employees give our organization the means to tackle the challenges our state and nation face and promote the value of choosing to serve as citizen-Soldiers and Airmen.



PEOPLE & DIVERSITY

Increased in our force in diversity from 2011 to 2023

- Females have increased **13.8%**
- Minorities have increased **15.1%**



PRIORITY—MODERNIZATION

Modernization ensures we have the right forces, infrastructure, training spaces, and systems for our current and future missions.

As our challenges and adversaries change, we require forces, equipment, and training to ensure our state and national security.



MODERNIZATION HIGHLIGHTS

- New all-weather radar pod, AN/ASQ-236
- Military museum at Camp Ripley
- Health of the force
- Armories renovation
- 8 new C-130J Super Hercules aircrafts
- 18 new M109A7 Paladin howitzers



PRIORITY—PARTNERSHIPS

A wide range of partners

- local community groups
- state agencies
- civil authorities
- national departments and institutions
- international organizations and allies
- State Partnership Program (SPP)



COUNTRY PARTNERSHIP CROATIA



State Partnership Program

Since 1996, leaders and members of the Minnesota National Guard and the nation of Croatia have been collaborating and building relationships within the framework of the National Guard Bureau's State Partnership Program (SPP).



COUNTRY PARTNERSHIP NORWAY



Norway became an official SPP member in 2023 with Minnesota after 50 years of conducting NOREX.

This partnership will increase the Minnesota National Guard's interoperability with a NATO ally and build upon already established ties.



LONGEST BILATERAL PARTNERSHIP NORWAY



U.S. Norway Reciprocal Troop Exchange

The Minnesota National Guard continues to execute the country's longest-running troop exchange with the Norwegian Home Guard, a partnership initiative that started in 1974.

Soldiers and Airmen trade places to experience each other's training, military lifestyle and culture.



COMMUNITY PARTNERSHIPS

Partnerships allow us to expand our reach, capabilities and effectiveness.

We develop meaningful relationships with stakeholders and our communities, and we cherish and build partnerships with local, state, national and international organizations. We strive to improve communication and operational efficiencies and effectiveness with partner agencies.



PARTNER ORGANIZATIONS



...AND MANY MORE.

BEYOND THE YELLOW RIBBON (BTYR)



- Began in 2007
- 53 Cities
- 79 active companies and organizations
- In 2023, they contributed more than \$511,000 and 659,000 volunteer hours in support of the state's military community.



MINNESOTA MILITARY RADIO

LISTEN
NOW



Minnesota Military Radio began in 2010 and has many great accomplishments:

- 2011, traveled to Kuwait to visit the 1st Armored Brigade Combat Team
- 2016 & 2019, the program joined Serving Our Troops to bring a piece of Minnesota to deployed service members
- 2017 & 2023, the show traveled to Norway, capturing the excitement of the Norwegian Exchange
- 2023, 13 years on the air and 700 unique shows recorded. On 66 live radio stations across the state and worldwide via podcast



ECONOMIC IMPACT

2023 IMPACT TOTALS

FEDERAL FUNDING 96%

STATE FUNDING 4%

ASSIGNED MEMBERS 12,576 *

** Soldiers: 10,386 | Airmen: 2,190*

FEDERAL FUNDING \$736,260,506

STATE FUNDING \$30,887,809

IMPACT PER MEMBER \$61,001

TOTAL IMPACT

\$767,148,315

MAJOR SUBORDINATE COMMANDS



Joint Force Headquarters



Camp Ripley Training Center



148th Fighter Wing



34th Infantry Division
Red Bulls



133rd Airlift Wing



1st Armored Brigade
Combat Team



347th Regional
Support Group



84th Troop Command



Medical Detachment

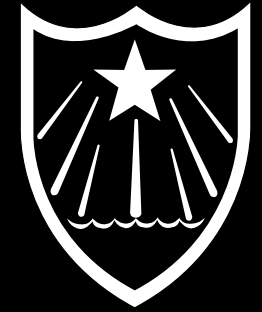


175th Regional
Training Institute



34th Expeditionary
Combat Aviation Brigade

JFHQ



Joint Force Headquarters, Saint Paul

A joint Army and Air National Guard unit tasked to oversee operations for all state National Guard forces.

The Joint Force Headquarters (JFHQ) coordinates military support at the request of the governor in the event of a disaster or state emergency.



34TH ID



34th Infantry Division “Red Bulls,” Arden Hills

Provides training and readiness oversight for nine National Guard brigades with more than 23,000 Soldiers across Minnesota and eleven other States.

In Minnesota, the 34ID includes the 1st Armored Brigade Combat Team (ABCT), 34th Expeditionary Combat Aviation Brigade (ECAB), 84th Troop Command, and the 347th Regional Support Group.



34TH DIVARTY



34th Division Artillery, Arden Hills

The first of eight such National Guard units. The unit increases capabilities at the division headquarters by providing long-range precision fires, command, and control of division-level artillery assets, fire support, and synchronization of joint fires.



34TH ECAB



**34th Expeditionary Combat Aviation
Brigade, Inver Grove Heights**

**Provide UH-60 Black Hawk and
CH-47 Chinook helicopter for federal
and state missions.**



1ST ABCT

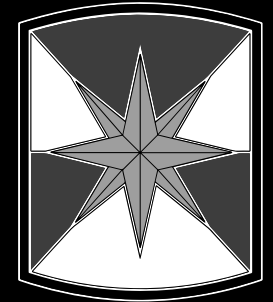


**1st Armored Brigade Combat Team,
Rosemount**

**Constitute more than half of the
Minnesota National Guard's total
soldier force.**



347TH RSG



34th Regional Support Group, Brooklyn Park

Mission is to deploy and provide life support and command and control of military base operations.

The unit's responsibilities include leading the reception, staging, onward movement, and integration of supporting forces as they arrive, managing facilities, and providing administrative, medical, and logistical support for troop services on a base camp.



84TH TRC



84th Troop Command, Cambridge

Maintains control of field artillery, military police, engineer, and civil support forces, providing a force capable of performing a wide variety of missions.

A specialized command with a unique mission, the 84th Troop Command maintains training standards to remain ready to support federal missions in addition to conducting domestic operations throughout the state.



175TH RTI



175th Regional Training Institute, Little Falls

Provides combat arms, Military Occupational Specialty and leadership training to the U.S. Army to prepare Soldiers and units for deployment at maximum combat readiness levels.



MED DET



The Medical Detachment, located in Cottage Grove

Oversees the ‘health of the force’ for Minnesota National Guard Soldiers.

Provide case management, behavioral health, licensed drug and alcohol support, and conduct Soldier Readiness Processing for the state.

The Medical Detachment and Office of the State Surgeon merged to become a major support command on October 1, 2023.



133RD AW



133rd Airlift Wing, Minneapolis-St. Paul International Airport.

The wing provides the U.S. Air Force with tactical airlift capability to transport troops, cargo and medical patients across the globe in addition to providing the citizens of Minnesota with domestic operations and disaster response support.



148TH FW



148th Fighter Wing, Duluth

Flies the Block 50 F-16CM, the newest and most capable F-16 in the U.S. Air Force fleet.

One of only two Air National Guard wings trained to provide Suppression and Destruction of Enemy Air Defense for our nation.



CAMP RIPLEY

Capabilities:

- 45 Live Fire ranges
- 23 Non-Live Fire ranges
- Simulations
- Rail Line
- Miller Army Airfield
- Morale welfare & Recreation
- Lodging
- Education Center



ACTIVATIONS

This past year we had Soldiers & Airmen deploy and return from various missions:

- 332 deploy
- 689 return

Locations of the missions were:

- Kuwait
- Europe
- Southwest Asia
- Columbia
- Romania
- Columbia
- Romania
- Djibouti
- Qatar
- Antarctica
- Japan
- And more!



SERVE HERE



- Education Benefits
- Pay Benefits
- Retirement Benefits
- Career training
- Healthcare & Life insurance
- Incentives



LIVE HERE. WORK HERE. SERVE HERE.

THANK YOU

